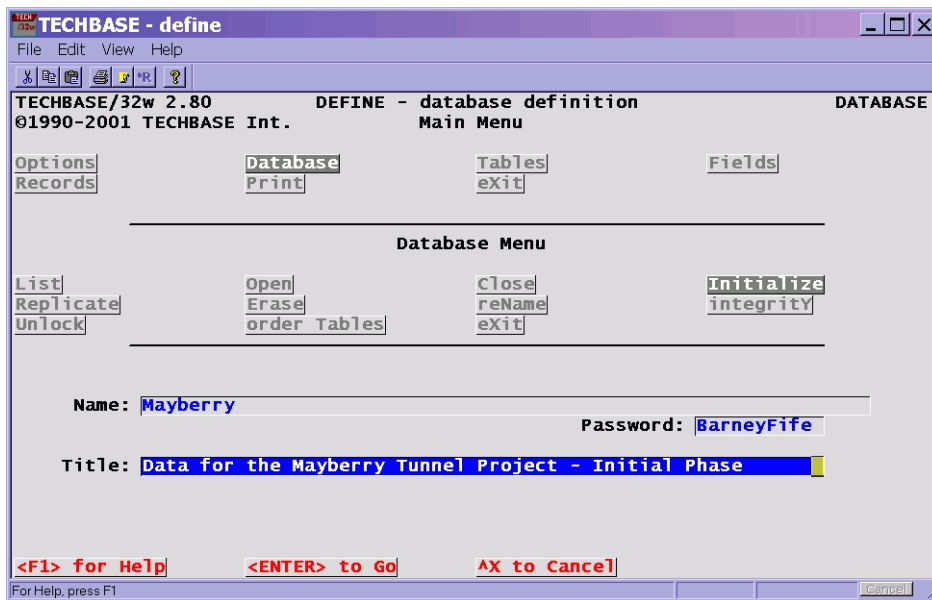
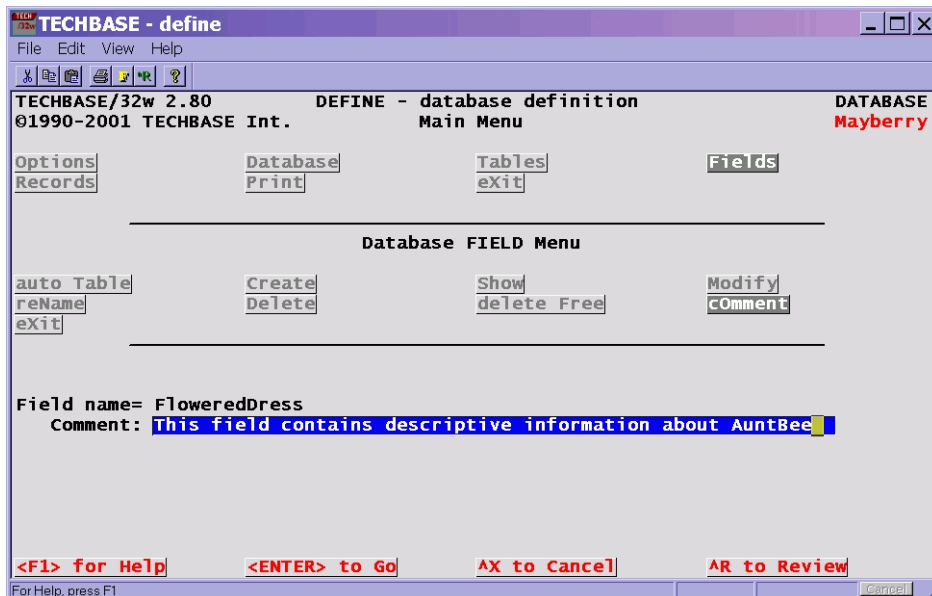


Adding descriptive comments to your **TECHBASE** database is an essential part of a well-constructed database structure. Comments, or descriptions, can be added to any **TECHBASE** database, field, table or graphics metafile. Comments not only help you record what each file contains, but are critical for future users of **TECHBASE** databases.

Adding Comments to Databases, Fields and Tables: When you initially construct a **TECHBASE** database, you are given the opportunity to add a comment describing the general nature of the database you are creating. Typically comments would run something like "Well-log data from the Pegasus Project". The screen shot below shows where you would enter a comment or title in Database/Initialize.



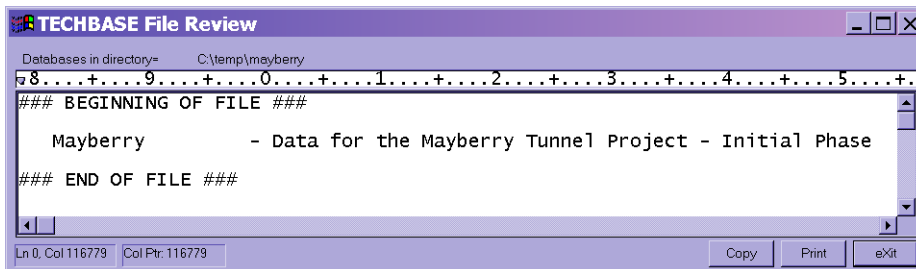
Comments may be added to Database Fields and Tables in the *Define/Tables/cOmment* and *Define/Fields/cOmment* menus as illustrated below.



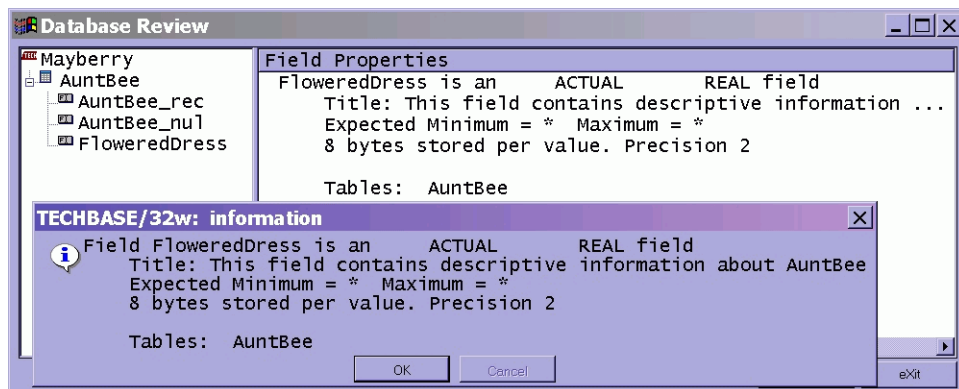
The comments can be displayed using *Define/Tables/Show* and *Define/Fields/Show*, or the *Database/Show* menu in other **TECHBASE** programs.

Technote: Database Formatting

Database/List will display **TECHBASE** databases in the current working directory and will also show the Database name and the comment or title you have assigned to this database:

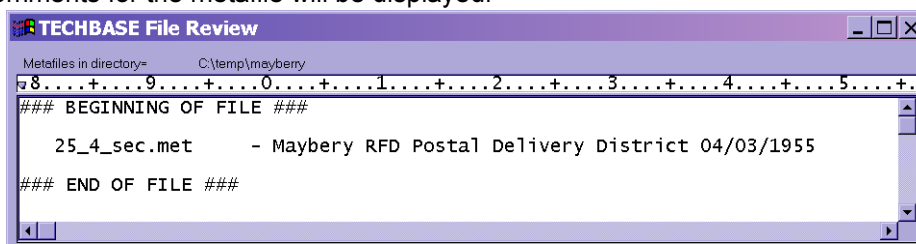


Database Titles, Field and table comments are also shown when you use right-mouse properties on the database name in the ^R database review.



These comments will also be included as part of the database dictionary when you use the Define/Print option, printing database definitions to the output file.

Adding Comments to Metafiles: Comments can be added to **TECHBASE** metafiles in the Graphics menu which is in all the **TECHBASE** graphics programs. Comments describing **TECHBASE** metafiles can only be entered after the metafile has been drawn in the *Graphics/cOmment* menu. Alternately, you can open a metafile, select Append=YES, and add comments to the metafile. Thereafter, if you select Graphics/List, the comments for the metafile will be displayed:



Database Replication: If you wish to create a database with the same Table and Field definitions as an existing database, you can easily do so in the Define program. First Initialize a new database in the Database/Define/Initialize choice. With the new database open, go to Replicate and select the database you would like to duplicate. You will receive a message similar to that shown below that the database is being replicated. **TECHBASE** will then copy Table and Field definitions directly into the database you are initializing. No records will be imported into the new database, just the structure of the original database.

