

ODBC is a standard developed by Microsoft to support data compatibility between different database applications. ODBC is a programming interface that uses relational database Structured Query Language (SQL) as its database access language. In a practical sense, ODBC allows users to store their data in a variety of databases, and process this data using other applications. Techbase is an ODBC compliant database client.

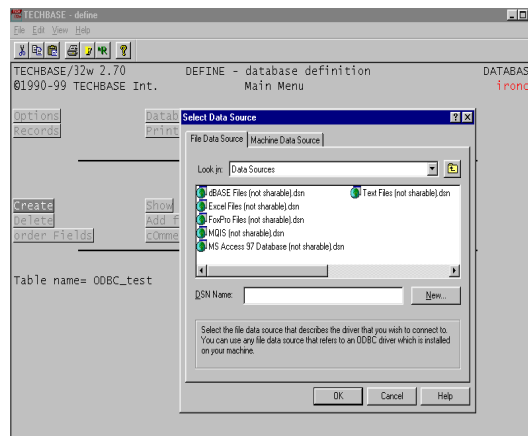
For the Techbase user, ODBC is an important addition to our database manager because it allows you to store your data in any ODBC compliant database (Access, Oracle etc.), yet view, edit and process, and delete this data in Techbase as well as add additional fields, such as calculated fields. Limits on data access may, however, be imposed by either your other database manager or the type of access you have defined when you set up the ODBC connection on your operating system. To set up an ODBC connection you must first define it on your operating system, then finish by setting up the connection in your Techbase database.

### Step 1) Setting up the ODBC Connection on your Operating System

You must first set up your ODBC connection on your Operating System. To get to this menu using Windows, go to Control Panel/ODBC Data Sources. You will probably see some User Data Sources already defined under the User DSN tab. Add additional data sources under the System or File DSN tabs. When you define these sources, you can set parameters such as database passwords, and read only settings. If you use a database that is accessible only by using a password, it would be prudent to enter this password here - otherwise you will be prompted for it each time you open your ODBC table. For detailed information on setting up an ODBC connection on your operating system, see your network administrator or operating system manufacturer (Microsoft, Sun etc.).

### Step 2) Setting up the Techbase - ODBC connection

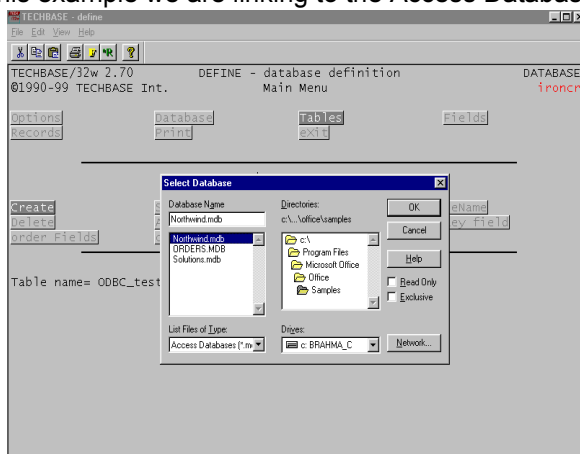
Next, set up your ODBC connection in Techbase. ODBC is a table type in Techbase. First open, or initialize, your database and go to Define/Tables. You should have some knowledge of the table you would like to connect with via ODBC such as what fields you need to link. Define a new table and name it something that is descriptive of the contents and/or source such as Collar\_ODBC. After naming the table, select table type "ODBC". A window will then pop up asking you to select the data source for this table as shown below:



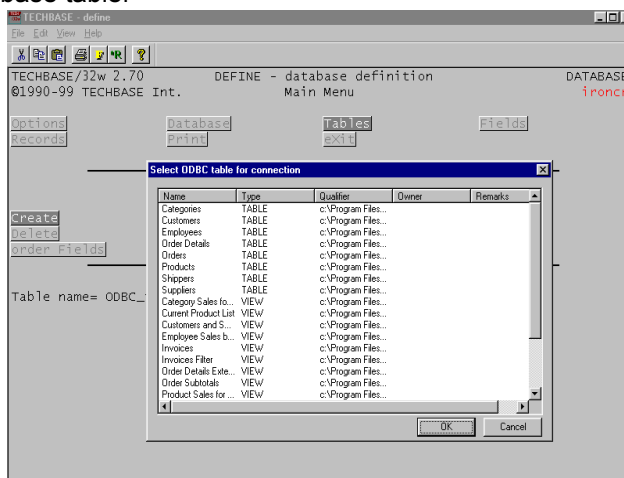
After selecting your data source, in this case a MS Access 97 Database, the next pop-up window will ask you for the specific database you would like link to.

# **Technote: ODBC - Open DataBase Connectivity**

In this example we are linking to the Access Database Northwind.mdb:



Next you must select which table within the database which stores the data you want to include in your Techbase database. After selecting the appropriate table, you are enabled to delete any fields you do not want to include in your Techbase table:



You have now established an ODBC connection to your Access database. A database review will show the new ODBC table, and field properties which have been transferred to your new Techbase ODBC-type table:

